

North Wales Energy Strategy

Our vision for 2035

"Delivering maximum local economic, social, ecological and wellbeing benefits from transitioning to a net zero economy and becoming a net exporter of low carbon electricity through cross-border and regional cooperation"

Our priorities

To harness the abundance of local low carbon resources to become a green powerhouse and diversify the energy mix

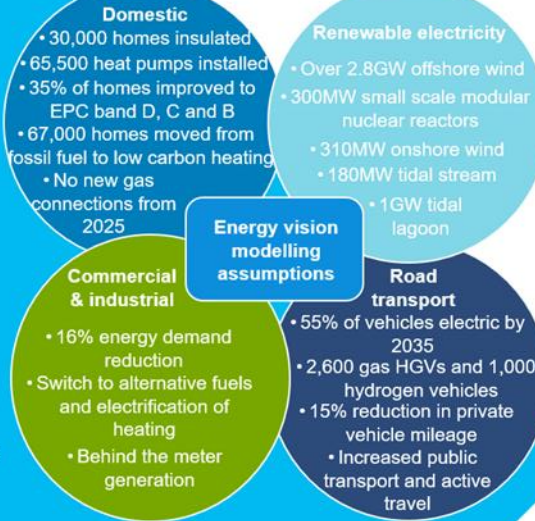
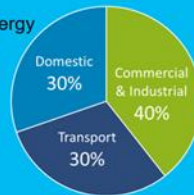
To become a world-leader in offshore wind and marine technologies

To improve the energy efficiency of the region's housing and accelerate the decarbonisation of North Wales' building stock

To achieve a shift to lower carbon transport

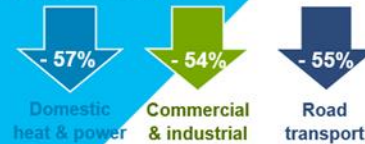
Our baseline energy assessment

- We consume **23%** of total energy consumed in Wales
- We host **37%** of Wales' renewable energy capacity
- 0.7%** of our homes use a biomass boiler or heat pump
- We have **1,183 MW** of renewable energy installed in the region, of which **8%** is locally owned
- Our total energy consumption fell by **5%** between 2005 and 2017 and the greenhouse gas emissions from our energy system fell by **28%**
- Commercial and industrial electricity consumption constitutes **71%** of all electricity consumption in the region
- Transport is dominated by private car use with **0.1%** of cars pure electric
- 36%** of our homes are EPC band E, F or G
- Our sectoral energy demand split:

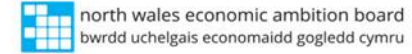


Achieving our energy vision

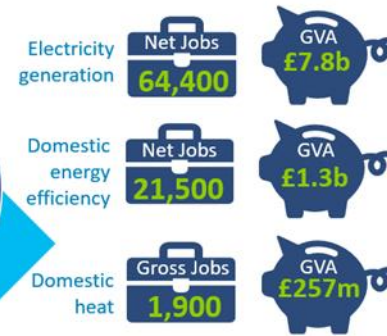
To be on track for net zero by 2050, we need to reduce emissions from our energy system by **55%** by 2035. Energy modelling achieves this reduction split by sector as follows:



Our energy vision is also supportive of the ambitions of the Wellbeing of Future Generations (Wales) Act 2015.



Estimated economic impacts of achieving our energy vision:



£15 billion spend required to achieve our energy vision

Not all of the jobs will be held by North Wales residents; some jobs will be held by persons outside of the region

The additional jobs associated with this vision will require strengthening and building new skills within the region

* all figures shown are approximate values